

ACCELPRO VIRTUAL SSL VPN SOLUTION FOR SERVICE PROVIDERS

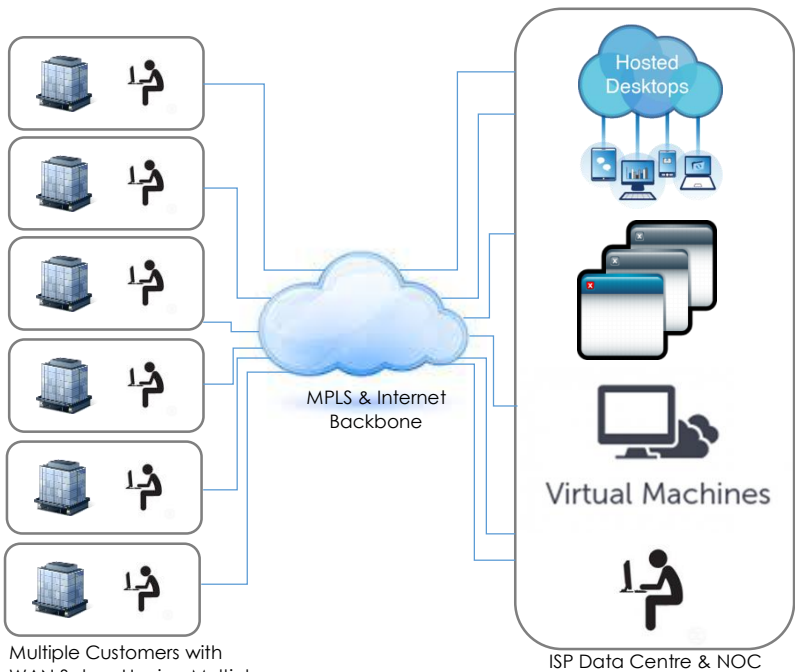


PRODUCT OVERVIEW

As the world's mobile worker population has passed more than 1 billion mark and continuously increasing day by day. Mobility VPN has become the need of the hour for every businesses. Addressing this requirement, ISP's are looking to deploy carrier class solution which supports Virtual environments and can provide scalability and security. Industry has seen the change for achieving End-to-End security. Solution at ISP should be able to host multiple virtual machines on same hardware which makes the solution more affordable while at the same time providing complete data privacy for each VM and providing dedicated reports. With AccelPro Virtual SSL VPN solution, service providers can provide most affordable, scalable and dedicated virtual machines hosted on single hardware solution with better performance. AccelPro provides true carrier class solution for ISP with its innovative HPAA technology which eliminates the barriers which kept SSL VPN solution for small deployments. With quick client login time which is about two seconds in AccelPro, service providers can securely provide SaaS (Software as a Service) with better user experience to their customers. AccelPro Virtual SSL VPN Appliance offers all the features of award winning AHOS.

Product Description

Typically, service provider have vast network setup comprising of MPLS VPN, Leased Lines and Internet Backbone. Having vast data centres and NOC setup, ISP serves multiple customers from the same backbone and connect multiple customer locations into wide area network along with their Data Centres. Customers also avails their offering to host their applications in SP Data Centre, thus cutting lot of IT cost, at the same time achieves better connectivity and 24X7 access to the applications. AccelPro, right from its inception, solved fundamental problem in existing SSL VPN's, delivering most performing SSL VPN Ever.



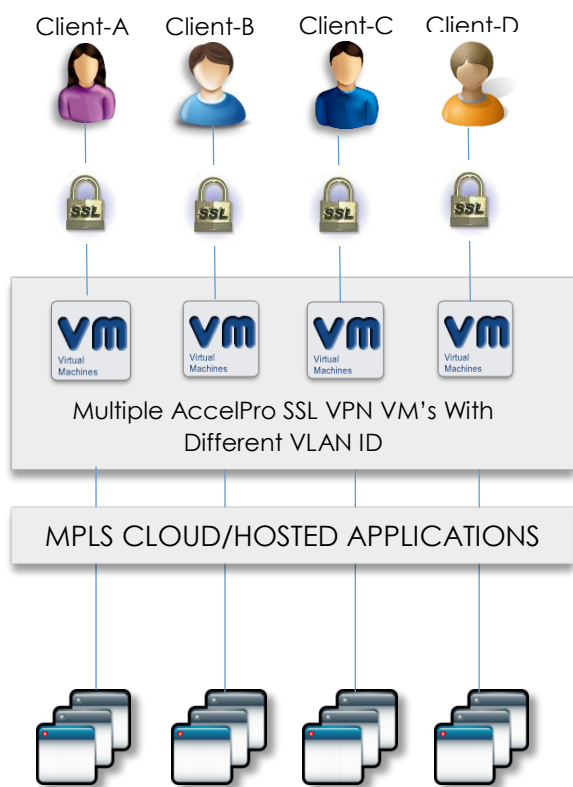
Multiple Customers with WAN Setup, Having Multiple Branches & Roaming Users

ISP Data Centre & NOC

Main challenge for ISP's is to offer highly scalable, performing SSL VPN service which could use virtualization platform and able to create multiple independent virtual SSL VPN gateways, which can be independently configured for each customer and thus providing independent reports to each customer and maintain their data privacy. VLAN tagging for each customer is very important and proving integration with their own authentication server makes solution complete.

Architecture & Key Components

AccelPro Next Generation, Virtual SSL VPN platforms fulfil the requirement of Service Provider for managed VPN service. They can host thousands of independent dedicated SSL VPN virtual machines on VMware. Each VM will act as a fully independent virtual SSL VPN gateway, and can be fully configured for independent customer.



As you can see from the above diagram, multiple dedicated AccelPro Virtual SSL VPN machines are created using VMware on AccelPro Carrier class hardware server. Now each customer will have their own dedicated hosted SSL VPN server, which can be fully configured as per their requirement. You can also choose to assign different hardware resources such as CPU, RAM, Hard Disk space for each Virtual Machine. You can put different user licenses on each Virtual SSL VPN. Also restricted or full Admin privileges can be given to customer administrator and separate reports can also be provided for each customer. AccelPro hardware can be integrated with MPLS router or internal network of service provider data centre, thus customer can access their MPLS cloud on the go or can access their hosted applications in secured way without compromising on the performance. This solution enables Mobility VPN for end customers, where they can access their MPLS Cloud or Enterprise Applications or Network Resources from Anywhere, Any machine, Anytime.

Authentication Server

With AccelPro Next Generation products, External Authentication Server such Active Directory, LDAP or Radius can be integrated individually to each Virtual SSL VPN Machine. This feature enhances better security for the users who have MPLS Cloud with the Service Provider and have hosted their Corporate Applications in Service Provider Data Centre.

Full Network Access

With unique Full Access Client (FAM) of AccelPro SSL VPN, which is powered by HPAA™, provides unmatched End User experience, while they connect to their Virtual SSL VPN gateway and access their Private Network Resources or Applications. Client login time of less than 3 Seconds, makes user feel as he is sitting inside his LAN only. Individual customers can access their entire MPLS Cloud or Private Network separately with full Network Access. AccelPro can provide faster access up to 30 times using Full Access Mode, which also acts as WAN Accelerator Solution for faster Application Access.

Access Control Policies

Individual Access Control Policies can be defined for each Virtual SSL VPN machine. Access can be given till a particular IP in the network, host name or a particular network range can also be provided access. You can also provide access based on protocols such as Application Port, Source IP, Destination IP or Application Type. All the policies are applied on a group and multiple groups can be created in dedicated Virtual SSL VPN Machine, thus providing different Access Controls with in the same Virtual SSL VPN Machine.

Individual Reporting

Using AccelPro solution, Service Providers can provide individual reporting to their customers. Reports can be extracted as XLS sheet and sent to customers. If required Admin Access to their respective Virtual SSL VPN Machines can be provided with Restricted or Read Only Access.

High Scalability

AccelPro Virtual SSL VPN Appliances are designed and developed as a carrier class products. Depending upon the hardware configuration, solution can be scalable to take any type of load. APG-6200 AccelPro Hardware Appliance is designed to meet ISP requirements, providing up to 4 Gbps SSL VPN throughput and can handle up to 20,000 concurrent user connections at any given time, making it most performing, scalable SSL VPN hardware solution in the world.

AccelPro Virtual SSL VPN Features & Benefits

Features	Benefits
Layer 3-7 SSL VPN	<ul style="list-style-type: none"> Layer 3-7 SSL VPN connectivity, protocol supported till Application Layer Group based Granular Access Control, Role based Access.
Seamless Access	<ul style="list-style-type: none"> Access from Anywhere, Anytime and Anymachine Mobility VPN for Full Network Access with Endpoint Security Zero Support Calls, can bypass any firewall, All Applications supported on single port 443
Endpoint Security & Compliance	<ul style="list-style-type: none"> Full Access Client, checks endpoint compliance for Windows, Linux and MAC platforms Facility Custom designed endpoint security policies Automatic NAC functionalities for 24X7 Endpoint Compliance
Split Tunnelling/Full Tunnelling	<ul style="list-style-type: none"> Provision to configure groups and Full Access Client in Split or Full Tunnel modes
Automated Client	<ul style="list-style-type: none"> Automatic deployments of Full Access Client setup at remote machines Web Access Mode, Thin Client and Full Access Modes Auto Updating Clients
WAN Acceleration	<ul style="list-style-type: none"> HPAA enabled platforms, providing faster Network and Application Access
Application HA	<ul style="list-style-type: none"> Preconfigured Client Installation Package where multiple Public IP's can be defined so that Client reaches available public gateway automatically providing seamless 24X7 Network & Application Access
Connectivity Options	<ul style="list-style-type: none"> Administrator can define Ideal Session Timeout to disconnect ideal users, Auto Reconnect feature to automatically connecting Client on Internet Drops for seamless user experience
Silent Mode Operation	<ul style="list-style-type: none"> Provisioned to provide Client login silently leaving user unaware of SSL VPN connections, Endpoint Compliance and other security features

Features & Benefits

AccelPro Virtual SSL VPN Appliances are the best available solution for securing data access to Service Provider's Data Centres, Cloud Providers, SaaS deployments with fast and easy access.

Pay Per User Per Month

Due to dynamic economic conditions of the markets, more customers are adopting Opex models. Service Providers, Data Centre Hosting solution providers can launch fast, cost effective, easy to use Pay Per User Per Month type of services successfully on AccelPro platforms providing better return on investment.

AccelPro Mobility Support

AccelPro delivers Secure Access Solutions to all type of Mobile devices such as smart phone (iOS, Android and Windows Phones). Any user who would like to access any applications such as Web Applications or Client Server Applications are fully supported on AccelPro platforms.

Tomorrow's Solution Today

Users can access all type of Applications, Virtual Desktops, Network Resources, Data Bases at one single location from Any Device, Any Location, Any Internet Connection. Better performance using AccelPro solution which provides remote users LAN like experience, makes it Tomorrow's solution Today.

Easy Deployment & Manageability

AccelPro Virtual SSL VPN solution is easy to deploy. New Virtual Machine, for a new customer can be created within few minutes up and running. AccelPro Full Access Client makes connectivity with your corporate effortless, as Client icon is created at the user desktop and by launching AccelPro Client, user is connected with Data Centre Network within few seconds. All three types of connectivity modes are supported, Web Access Mode, for accessing Web Applications without the need of any Client, Thin Access Mode, where all type of applications including Client – Server can be accessed without installing any client and Full Access Mode, where Full Network Access, all type of Applications and Network resources can be accessed with the help of Full Access Mode Client.

Improved Productivity

AccelPro Virtual Platforms supports various device platforms including Windows platforms, MAC, Linux, various mobile platforms including iOS, Android, Windows mobile making to access your corporate resources and applications from Anywhere and AnyDevice and AnyTime. This Mobility VPN platform increases the overall productivity. Different level of Access can be provided for different groups such as employees, contractors, vendors, dealers, business associates and small branches. AccelPro platforms enables organizations to adapt Public/Private Cloud Hosting as they are able to Access their Network Resources Anytime, Anywhere and Anymachine with increased security, strong Authentication and Faster Remote Access.

Specifications

Since AccelPro Virtual SSL VPN runs on VMware and is independent of hardware configurations, However AccelPro always recommends APG-6200 Carrier Class hardware Appliance for Service Provider deployments, which can take the load of 20,000 simultaneous users on a single device. Every ISP has different Network Setup and may require different specification. Please consult your local AccelPro Representative for the required product specification suitable for your network setup.

AccelPro Technologies Service & Support

AccelPro Products are proven best suited for Service Providers and Carrier Class segments due to Innovative Technology making them most performing and highly scalable, providing unmatched User experience. AccelPro Services provides optimization of your Networks and increases efficiency. AccelPro provides 24X7 support to its customers from its Global Technical Support Centres to maintain the operational efficiency for mission critical Applications and Resources.

Ordering Information

Model	Product SKU	Description
APVA	APG-VA	SSL VPN Virtual Appliance, Requires CCU License Separately, needs Virtual Environment
Concurrent User Licenses		
501 - 1000 CCU	APU- 1000	SSL VPN Concurrent User License, Required with AccelPro SSL VPN Hardware / Virtual Appliance
1001 - 5000 CCU	APU- 5000	SSL VPN Concurrent User License, Required with AccelPro SSL VPN Hardware / Virtual Appliance
5001 - 10000 CCU	APU- 10000	SSL VPN Concurrent User License, Required with AccelPro SSL VPN Hardware / Virtual Appliance
>10000 CCU	APU-PLUS	SSL VPN Concurrent User License, Required with AccelPro SSL VPN Hardware / Virtual Appliance

For More Information

To find out more about AccelPro Technologies products and solutions, please visit www.accelpro.net.

About AccelPro Technologies

AccelPro is a fast growing company into secure remote access solutions with innovative approach, which is transforming better technology ideas into business growth and better economies while addressing much needed requirement for faster secure remote access solution. AccelPro delivers next generation of SSL VPN solution which has revolutionized mobility VPN market. Additional information can be found at www.accelpro.net.

Corporate and Sales Headquarters

AccelPro Technologies India Pvt. Ltd.
349, Block-III, Near STPI, G.S.C.
Sector-29, NOIDA – INDIA – 201303
Phone: +91-120-4155514
www.accelpro.net

APAC Headquarters

Global Define Networks Pte. Ltd.
10 Anson Road # 26-04
International Plaza
Singapore - 079903
Phone: +65-61006675

To Purchase AccelPro solutions, please Contact your AccelPro representative at +91-120-4155514 or authorized reseller.

Printed in INDIA.

©2011 – 13 AccelPro Technologies India Pvt. Ltd. All rights reserved. AccelPro, HPAA, APG SSL VPN, and other AccelPro products and services mentioned herein as well as their respective logos are trademarks or registered trademarks of AccelPro Technologies in INDIA and other countries. All other product and service names mentioned are the trademarks of their respective companies. Data contained in this document serves informational purposes only. National product specifications may vary. These materials are subject to change without notice. These materials are provided by AccelPro Technologies for informational purposes only, without representation or warranty of any kind, and AccelPro Technologies shall not be liable for errors or omissions with respect to the materials. The only warranties for AccelPro products and services are those that are set forth in the warranty statements accompanying such products and services, if any. Nothing herein should be construed as constituting an additional warranty.