



AccelPro SSL VPN™ v3.2.0
AccelPro SSL VPN

End User Reference Guide On Digital Certificate Authentication

AccelPro Technologies makes no warranty of any kind with regard to this manual, including, but not limited to, the implied warranties of merchantability and fitness for a particular purpose. AccelPro shall not be held liable for errors contained herein for direct, indirect, special, incidental or consequential damages in connection with the furnishing, performance, or use of this material.

The product and company names mentioned in this document may be the trademarks of their respective owners. Throughout this document AccelPro has attempted to distinguish trademarks from descriptive terms by writing the name with the capitalization used by the manufacturer, or by writing the name with initial capital letters. AccelPro cannot attest to the accuracy of this information. Use of a trademark in this document should not be regarded as affecting the validity of the trademark.

Restrictions

Information in this document is subject to change without notice and does not represent a commitment on the part of AccelPro. The software described in this manual is furnished according to a license agreement with AccelPro. The license agreement contains all of the terms and conditions governing your use of the software and documentation, including all warranty rights, limitations of liability, and disclaimers of warranty.

Material contained in this document may describe AccelPro products not available or features not available in your country.

No part of this material may be reproduced in any form or by any means without permission in writing from the publisher.

Printed in India.

In This Manual

The *AccelPro SSL VPN End User Reference Guide* describes the installation and working of Digital Certificate based Strong Authentication for AccelPro SSL VPN Remote Users.

Audience

The manual is intended for General End User who would like to install Digital Certificate on their machines so that they can access their Corporate Resources Securely.

Printing History

The manual printing date and part number indicate its current edition. The printing date will change when a new edition is printed. Minor changes may be made at reprint without changing the printing date. The manual part number will change when extensive changes are made.

Manual updates may be issued between editions to correct errors or document product changes. To ensure that you receive the updated or new editions, you should subscribe to the appropriate product support service.

Copyright

All Rights Reserved. Copyright (C) 2011-2014, AccelPro Technologies India Pvt. Ltd.

Overview

AccelPro Secure Remote Access Solution is developed for Fast Secure Access to your Corporate Applications and LAN Resources. AccelPro SSL VPN series is equipped with a unique Client Agent, which is powered with HPAATM technology, enabling 2 seconds Client Login time and able to get a Virtual Private IP from the SSL VPN Gateway within the same time, giving remote user a LAN like feel, resulting in amazing end user experience.

FAM Client is small footprint software that gets installed on End User machine and provide Secure Remote Access to Corporate Applications and Network Resources. FAM client is very user friendly and fast for users working from company provided or managed machines.

Digital Certificate Based Strong Authentication

In today's scenarios, simple User Name & Password based Authentication is not enough since there is a rise in the Hacking Attacks as well as Advanced Threats emerging from Internet.

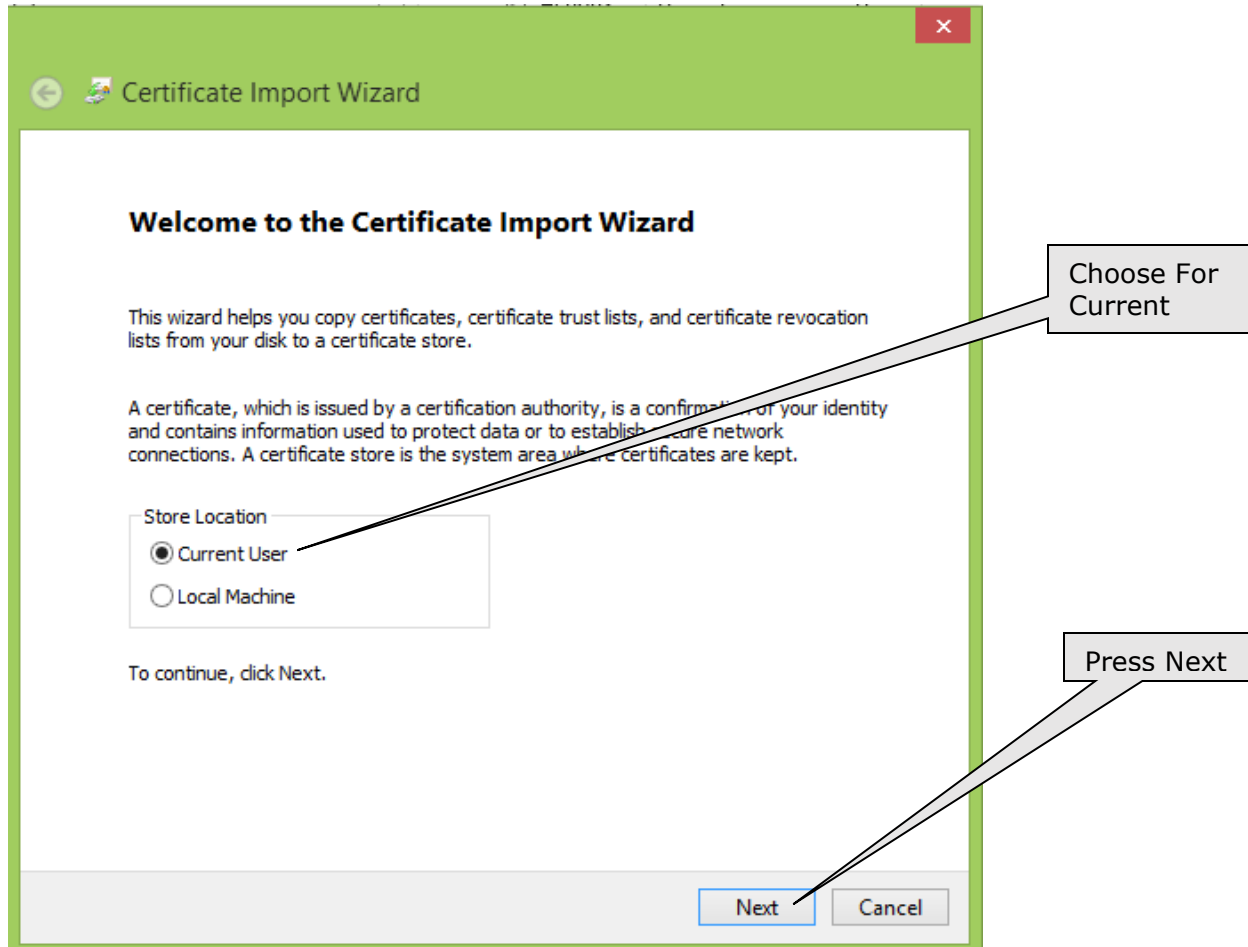
AccelPro brings Digital Certificate based solution for achieving Stronger Authentication Controls and Identity Access Management Solution bundled with Standard AccelPro Hardened Operating System (AHOS).

How It Works For You

User needs to install a small SSL Based Client Certificate in their machines. This Certificate is being provided by their IT Administrator.

How To Install Digital Certificate

Once you get your Digital Certificate from your IT Administrator, you need to double click on the Certificate File and select Open, after selecting Open you reach Certificate Import Wizard as follows:



Note: If you select "Current User" then this Certificate will work only for the Current User Logged into the Machine, and if you select "Local Machine" then this Certificate will work for all the Users created in the machine.

After selecting Next, it will ask for the location from where you would like to import the Certificate.

File to Import
Specify the file you want to import.

File name:

Note: More than one certificate can be stored in a single file in the following formats:

- Personal Information Exchange- PKCS #12 (.PFX, .P12)
- Cryptographic Message Syntax Standard- PKCS #7 Certificates (.P7B)
- Microsoft Serialized Certificate Store (.SST)

Simple
Select Next
to Continue

Enter Password To Install

To install your Digital Certificate you need to enter the password which is being provided by your IT Administrator, if you do not know the password please ask your IT Administrator.

Private key protection
To maintain security, the private key was protected with a password.

Type the password for the private key.

Password:

Display Password

Import options:

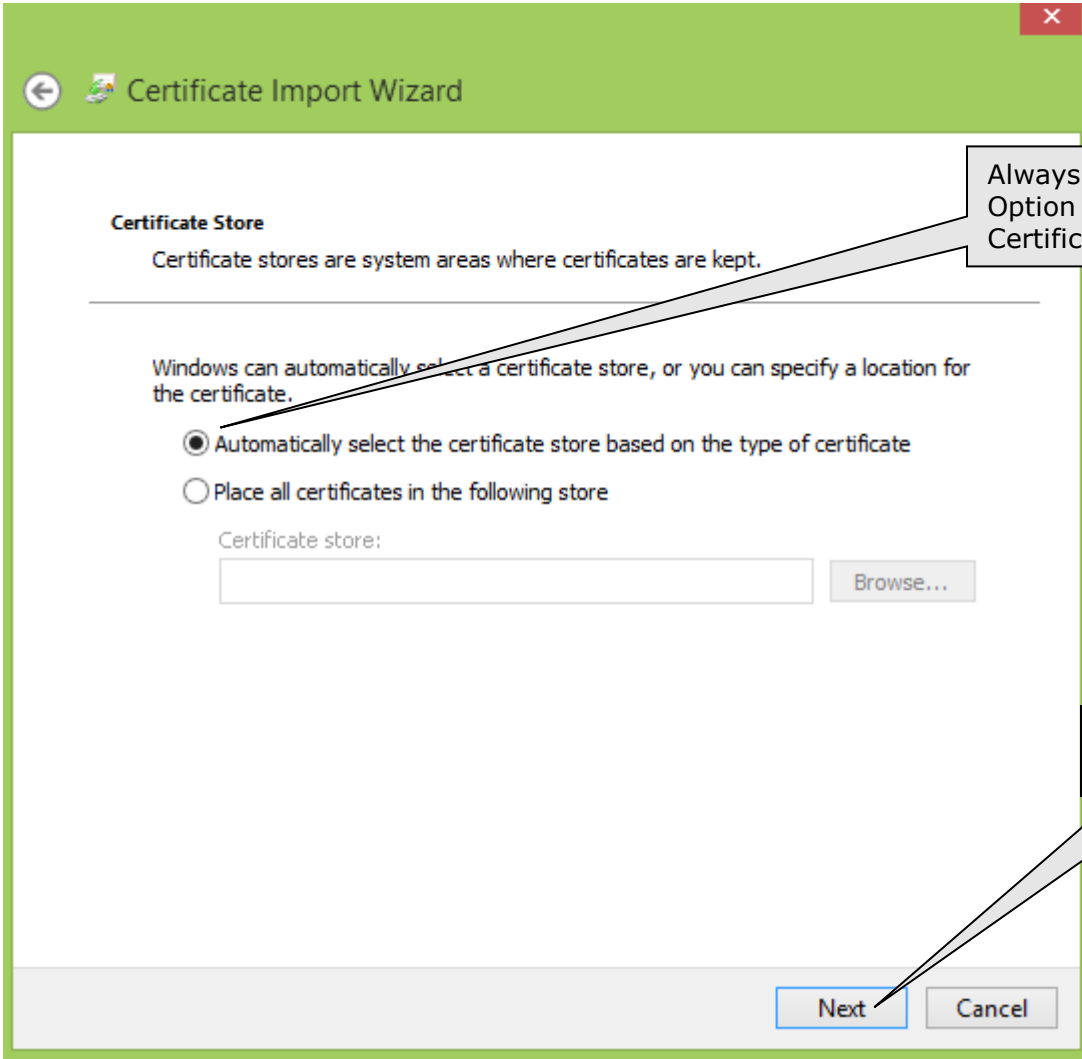
- Enable strong private key protection. You will be prompted every time the private key is used by an application if you enable this option.
- Mark this key as exportable. This will allow you to back up or transport your keys at a later time.
- Include all extended properties.

Enter Your Password Being Provided To You

Press Next To Continue

Next Cancel

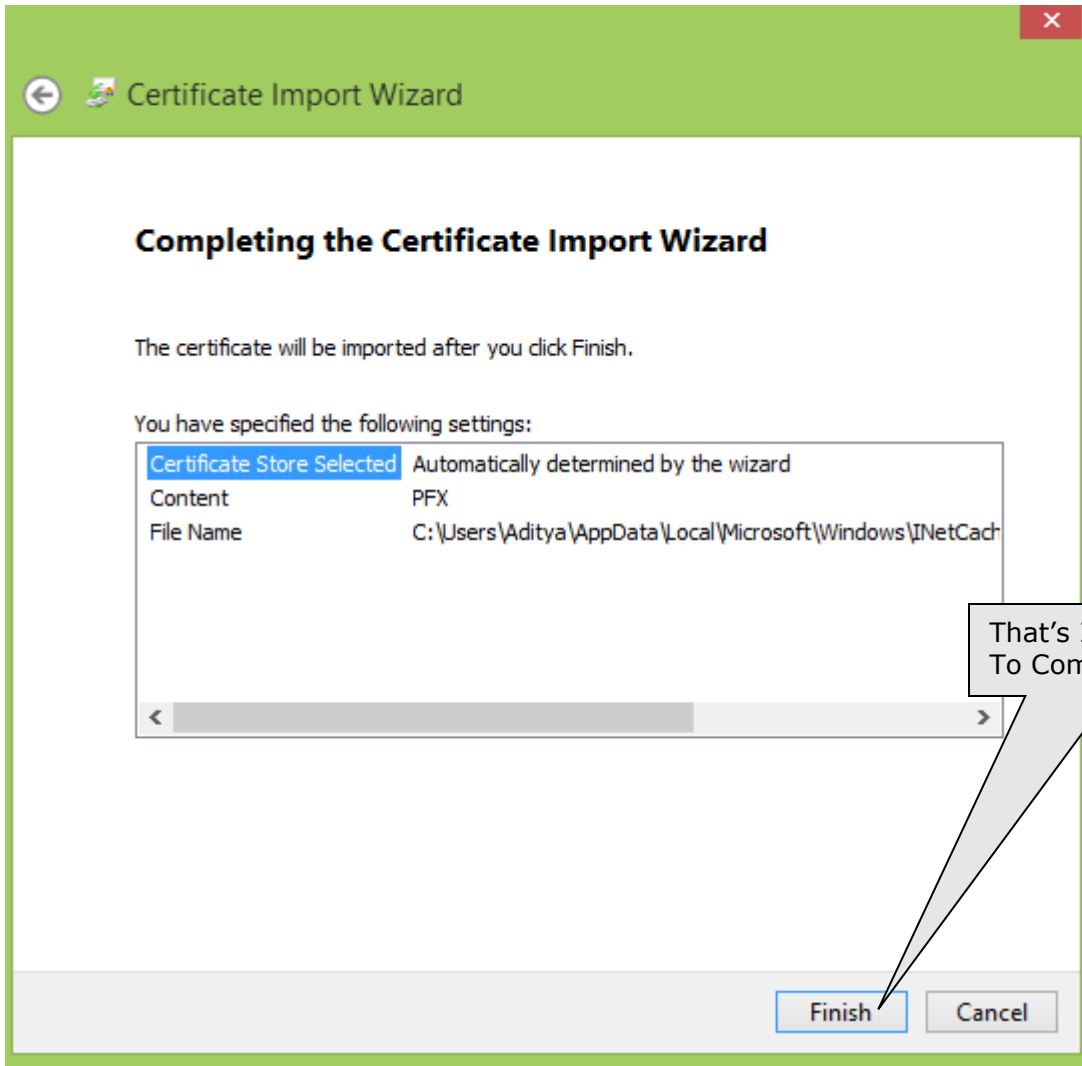
Store Your Password



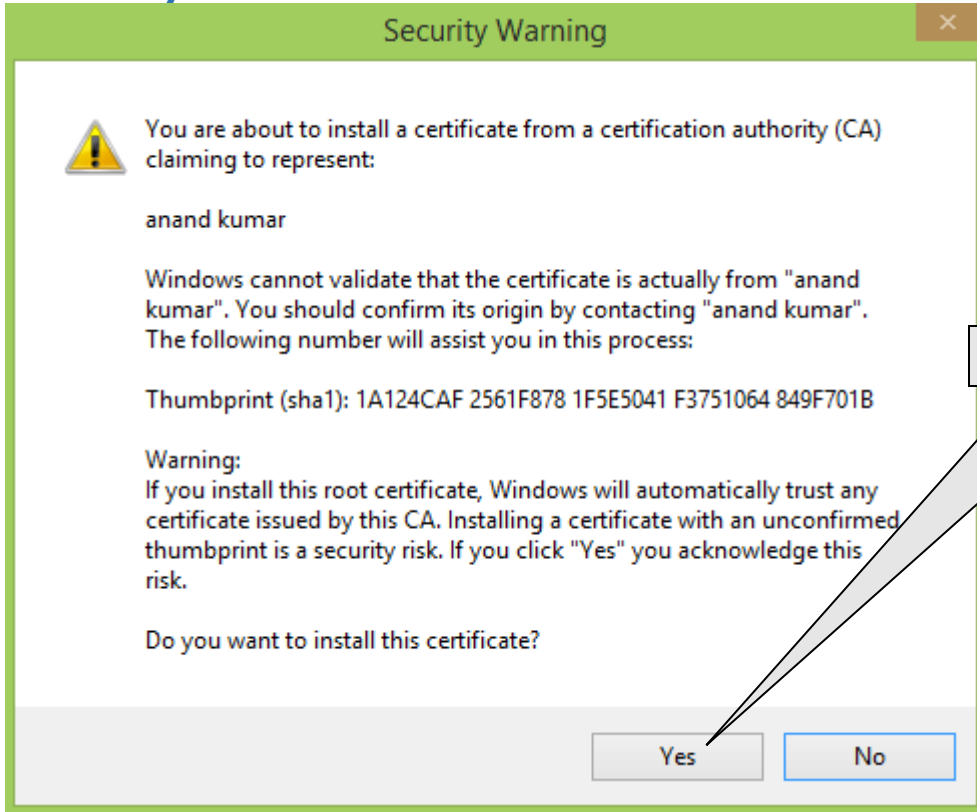
Always Select This Option To Store Your Certificate

Press Next To Continue

That's It

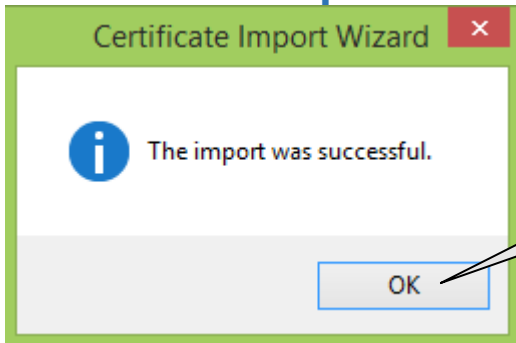


Security Window



Select Yes To Install

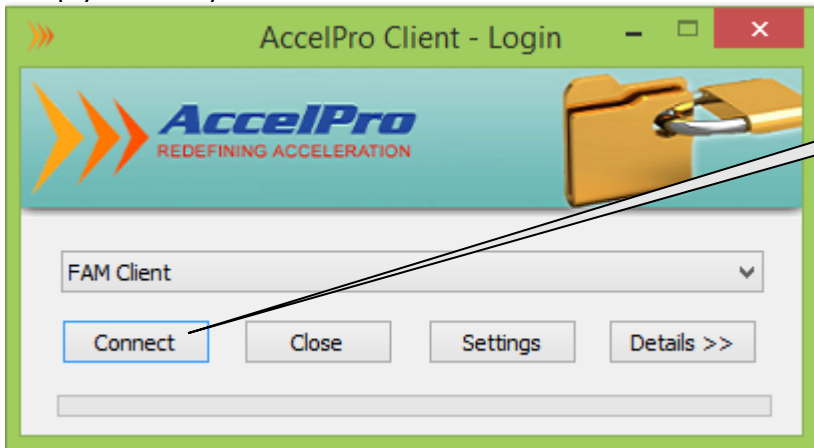
Successful Import



Congratulations! You Have Successfully Installed Your Digital Certificate, Press OK To Continue

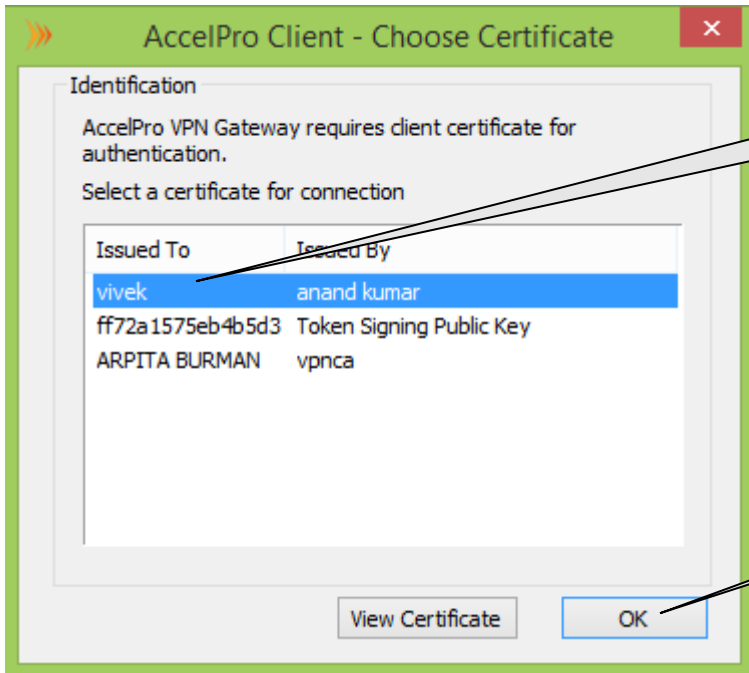
Connect With Digital Certificate

Simply initiate your AccelPro Full Access Client.



Click To Connect

Choose Your Certificate

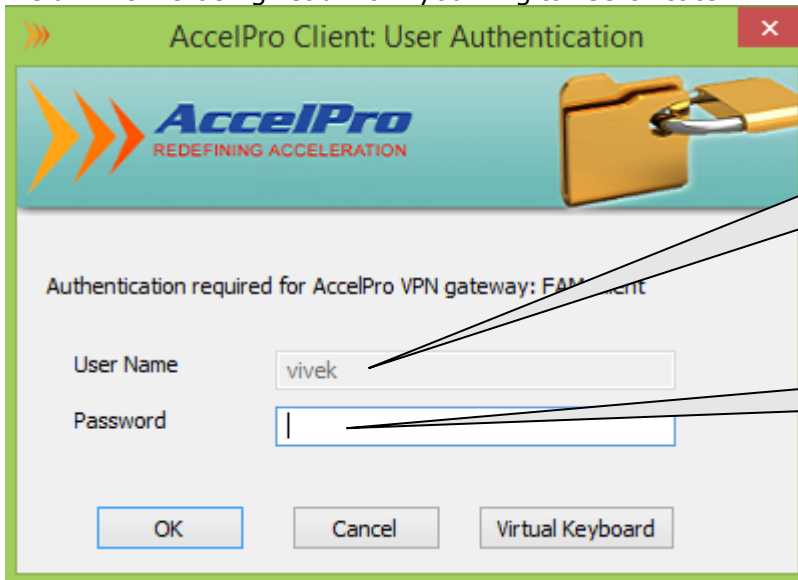


Choose Your Digital Certificate For Authentication

Select OK To Continue

Enter VPN Password

Now Enter your VPN password, as you see User Name appears automatically in the User Name Field which is being read from your Digital Certificate.



AccelPro Client: User Authentication

AccelPro
REDEFINING ACCELERATION

Authentication required for AccelPro VPN gateway: FAM Client

User Name: vivek

Password: |

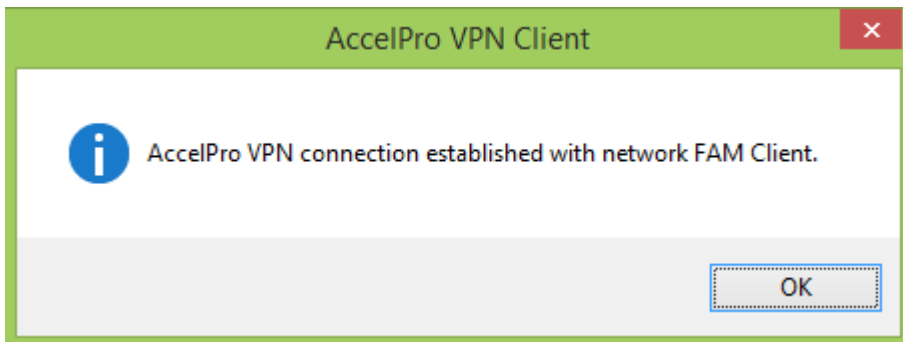
OK Cancel Virtual Keyboard

Un-editable User Name Automatically Appears In User Name Field Been Read From Certificate

Enter Your Password and Press OK To Continue

Note: Various parameters like Email Address, Serial Number, User Name or other field can be read from the Certificate for Authentication. These values cannot be changed by user.

You Are Connected



AccelPro VPN Client

AccelPro VPN connection established with network FAM Client.

OK

Benefits Of Using This Solution

By implementing this solution, organization can achieve higher End To End Security for their Corporate Network, Applications and End Users with the following benefits:

- You can bind the End User Machine for your Corporate Network Access, ie only those machines on which this Digital Certificate is installed, can access your Corporate Network.
- While user tries to connect using AccelPro Full Access Client, then AccelPro Full Access Client will automatically read the information like User Name, Email ID, Serial Number etc. from the Digital Certificate and paste the information like User Name automatically into User Name field of AccelPro Full Access Client Window. As a result, now that User cannot change or enter the User Name, he/she can only enter his/her VPN Password. That way you can enforce, only that User can login from that machine only.
- You can further enhance the Security by enabling the Password for Digital Certificate too. Now User will have to enter two passwords, one for Digital Certificate and one for VPN.
- Using this solution, you can restrict your Corporate VPN Access from Unauthorized Users as well as Unauthorized Machines and can force the User to Access your Corporate VPN from his Authorized Machine only hence achieving higher degree of Identity Access Management Controls too.

Snapshots Of The Solution

- Binding End User Machine
- Binding End User Name
- Strong Authentication
- Two Level Password Protection
- Identity Access Management Control
- No need of SMS Based Authentication
- Multifactor Authentication
- Enforcing the Use of Authorized Machines to Access Corporate VPN

Learn More How Can You Secure Your Network

To find out more on how you can secure your entire Network, achieving complete End To End Security for your Secure Remote Access requirements, please visit www.accelpro.net.

About AccelPro Technologies

AccelPro is a fast growing company into secure remote access solutions with innovative approach, which is transforming better technology ideas into business growth and better economies while addressing much needed requirement for faster secure remote access solution. AccelPro delivers next generation of SSL VPN solution which has revolutionized mobility VPN market. Additional information can be found at www.accelpro.net

AccelPro SSL VPN

AccelPro Technologies India Pvt. Ltd. New Delhi, India, +91-120-4155514, www.accelpro.net Copyright © 2012 AccelPro Technologies India Pvt. Ltd. Hybrid Performance Acceleration Architecture, Core SSL Engine, Optimized Compression Engine, HPAA, CSSL, OCE, APG-700, APG-1400, APG-2800, APG-5600, APG-6200 and Redefining Acceleration are Trademarks of AccelPro. For Sales email: sales@accelpro.net, For Support email: support@accelpro.net, For Information email: info@accelpro.net, Sales: +91-120-4155514, Fax: +91-120-2450349. Registered Office: E-703, Mayur Dhvaj, 60, I.P. Extension, Delhi, India – 110092.

Corporate and Sales Headquarters

AccelPro Technologies India Pvt. Ltd.
349, Block-III, Near STPI, G.S.C. Sector-29, NOIDA – INDIA – 201303
Phone: +91-120-4155514
www.accelpro.net

APAC Headquarters

Global Define Networks Pte. Ltd.
10 Anson Road # 26-04
International Plaza
Singapore – 079903
Phone: +65-61006675

To Purchase AccelPro solutions, please Contact your AccelPro representative at +91-120-4155514 or Authorized Reseller.

Printed in INDIA.

©2011 – 13 AccelPro Technologies India Pvt. Ltd. All rights reserved. AccelPro, HPAA, APG SSL VPN, and other AccelPro products and services mentioned herein as well as their respective logos are trademarks or registered trademarks of AccelPro Technologies in INDIA and other countries. All other product and service names mentioned are the trademarks of their respective companies. Data contained in this document serves informational purposes only. National product specifications may vary. These materials are subject to change without notice. These materials are provided by AccelPro Technologies for informational purposes only, without representation or warranty of any kind, and AccelPro Technologies shall not be liable for errors or omissions with respect to the materials. The only warranties for AccelPro products and services are those that are set forth in the warranty statements accompanying such products and services, if any. Nothing herein should be construed as constituting an additional warranty.